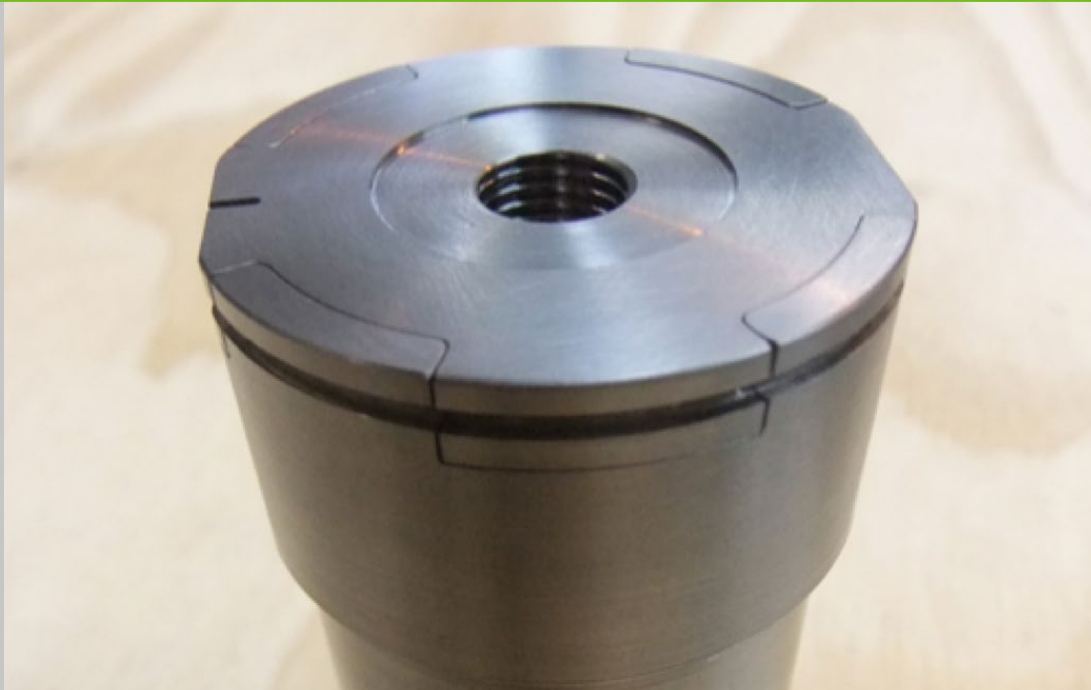


IMPACT SUBSEA LTD

Impact Subsea is the leading provider of innovative underwater engineering and product solutions to the Oil and Gas, Renewables and Scientific markets. Their products are used on Remotely Operated Vehicles (ROV), Autonomous Underwater Vehicles (AUV) and in stand-alone applications.



Challenges:

- Advise on 'Design for Manufacture' and facilitate prototyping stage
- Utilize CNC precision machining capability in Titanium alloy.

Delivery outputs:

- The Woollard & Henry team worked hand-in-hand with Impact Subsea throughout initial prototyping through to production volume.
- Quality and dimensional control was paramount whilst achieving the level of cosmetic finish required for showcasing a precision instrument.
- CNC Machining.

CUSTOMER IMPACT

“The ISA500 was designed from the outset to be ground-breaking by being the first underwater Altimeter to also provide the user with Heading, Pitch and Roll. It was therefore essential that we got the product right first time.

Woollard & Henry were exceptionally helpful from the outset. They provided machining guidance to help finalise our mechanical designs, assisted during the prototyping stage and importantly provided us with precision machined housings to a very high cosmetic standard.

Woollard & Henry continue to be our number one supplier for all machining work.”

BENEDICT GRANT
Managing Director, Impact Subsea Ltd.